



KR-RM Series

Online UPS 1~3kVA

- » Low THDi: < 5%
- » High AC/AC Efficiency Up To 93.5%
- » High Output Power Factor Up To 1.0
- » Hot-Swappable and Extendable Battery Design

Green Power

- AC/AC efficiency up to 93.5%, less operation cost and more energy saving
- Output power factor up to 1.0, more powerful to connect more critical loads
- Input PF >0.996 and THDi<5%, less power pollution and lower TCO

Typical Applications:



Flexible Rear Panel Configuration

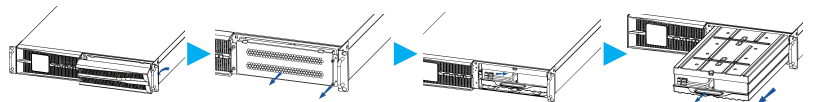
- Dry contact kits and SNMP are optional
- Selectable output sockets
- External battery pack port available
- Programmable power management outlet (optional)



Horizontal Display



Vertical Display



Hot-swappable Battery Design

- External battery pack is optional
- Easy for online battery replacement

User-friendly and Easy-shift LCD Display

- The digital display can be easily shifted through LCD setting to suit for vertical/horizontal installation.

Ecological Power Network

Technical Specification

MODEL	KR1000-RM	KR2000-RM	KR3000-RM
INPUT			
Voltage (Vac)	120-295		
Frequency (Hz)	50/60± 10% (50/60Hz auto-sensing)		
Power Factor	≥0.99		
THDi	<5%		
OUTPUT			
Capacity(VA)	1000	2000	3000
Max. AC/AC Efficiency	91.1%	92.5%	93.5%
Power Factor	0.9 (1 optional)		
Voltage (Vac)	208/220/230/240±1% (settable)		
Frequency (Hz)	50/60±0.2 (battery mode)		
THDv	THD < 3% (linear load), THD < 5% (nonlinear load)		
ECO mode	YES		
Transfer Time (ms)	0		
Overload	101%~115% load for 1min, 116%~133% load for 1s, above 134% load for 200ms		
BATTERY			
Voltage (Vdc)	36	48	72
BATT Type	3×7Ah12V	4×9Ah12V	6×9Ah12V
Charging Current (A) Max.	1		
OTHER			
Communication Interface	RS232, EPO, USB (slot) (SNMP, RS485+dry contact are optional in slot)		
*Output outlet	4×IEC320 C13	6×IEC320 C13 + 1×IEC320 C19	
Display	Blue screen LCD		
Alarm	Low battery, abnormal AC input, UPS failure, etc.		
Protection	Low battery, overload, short-circuit and over temperature, etc.		
Noise (dB)	< 50	< 55	
Working Temperature (°C)	0~40		
Relative Humidity	0 ~ 95%, no condensation		
Dimension (W×D×H) (mm)	438×420×87(2U)	438×570×87(2U)	
Weight (kg)	13.2	19.9	24.8

* Specification is subject to change without prior notice
 * IEC outlet is standard, other outlets are available and optional.

Kehua Hengsheng Co., Ltd.

Add: No. 457, Malong Road, Torch High-Tech Industrial Zone, Xiamen Fujian China
 Tel: +86-592-5160516 Fax: +86-592-5162166 www.kehua.com

